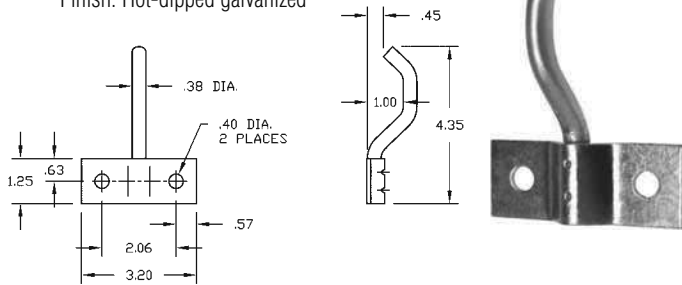


DOOR HOLDERS

No. 6603-50

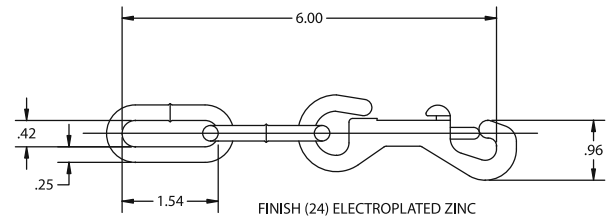
Offset post can be set up similar to 6602-U. Use different length links 2", 4", 6" to achieve desired positioning.

Weight: .28 lbs.
Finish: Hot-dipped galvanized



No. 6609-50

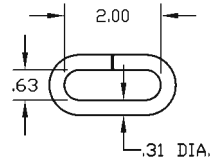
Chain link.



No. 6601-2

Std. 2" Link.

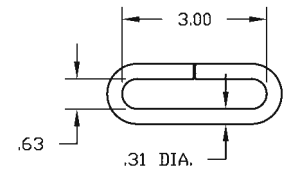
Weight: .24 lbs.
Finish: Hot-dipped galvanized



No. 6601-5

Std. 3" Link.

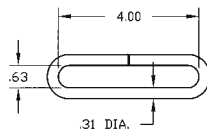
Finish: Hot-dipped galvanized



No. 6601-5

Std. 3" Link.

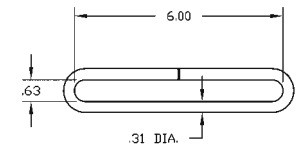
Finish: Hot-dipped galvanized



No. 6601-4

Std. 6" Link.

Weight: .29 lbs.
Finish: Hot-dipped galvanized



DOOR HOLDER LINK TYPE

All steel for trucks and trailer bodies with swing doors. Also may be used for any large swing doors on trucks, industrial buildings, ovens, etc.

Finish — Zinc plated

No. 55-2

Supplied with 2" Link

No. 55-4

Supplied with 4" Link

Parts for No. 55 Door Holder

55-100 - Hook & Bracket weldment

55-201 - Handle

55-202 - 2" Link

55-204 - 4" Link

